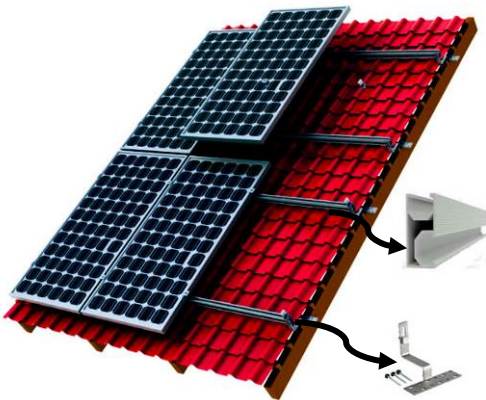


Residential Pitched Roof Mounting Racks

Features:

Outline Drawing



- ※ Excellent anti-corrosion performance
- ※ Design based on specific wind and snow loading, and seismic requirements
- ※ Excellent mechanical strength and easy to maintenance
- ※ High durability for at least 25 years
- ※ Aesthetic appearance due to innovative design
- ※ Easy and fast installation with lower labor cost

Specification:

Installation site : Residential Pitched Roof

Racking angle: Along the pitched roof direction, racks can be customized according to customer requirement;

Material : The rails (beams) and clamps are AL6063 T5 aluminum, oxide with film minimum thickness 15 μm . The hooks, bolts and nuts are stainless steel 304 .

Rail



Hook



Mid Clamp



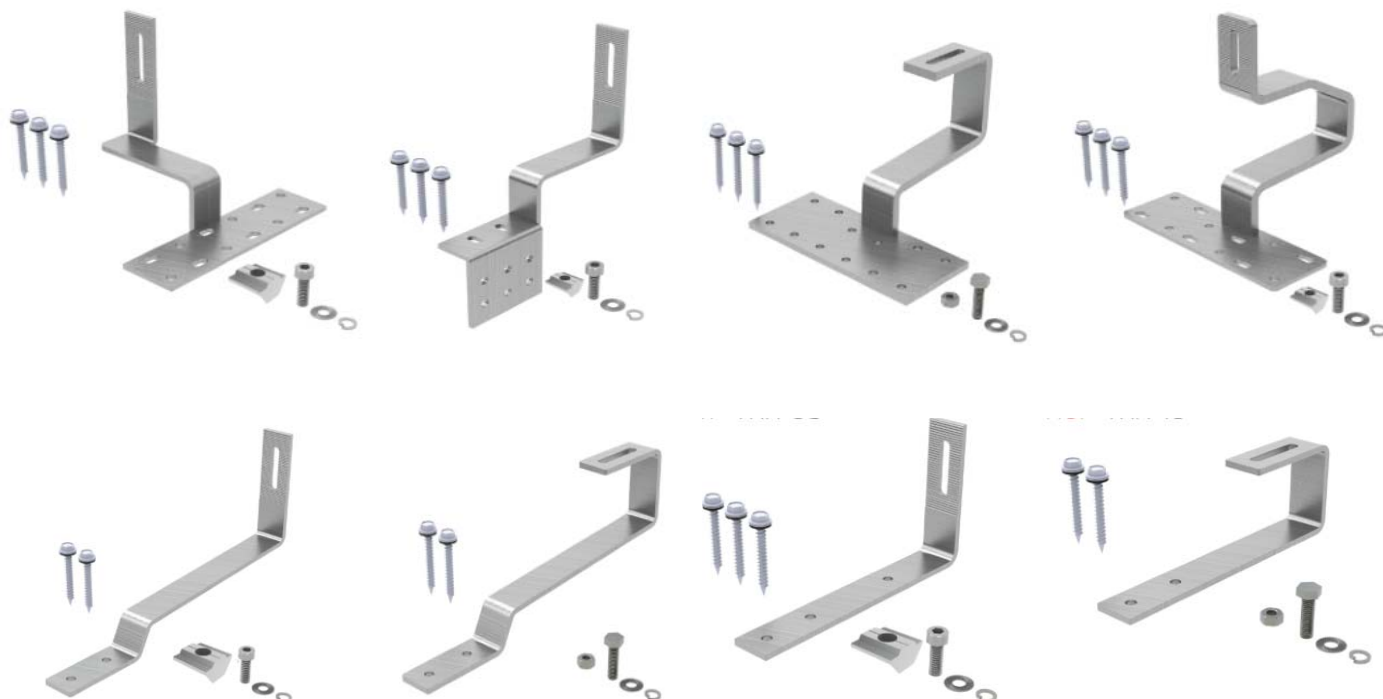
End Clamp



Bolts and nuts



Different Type of Hooks



Installation Steps:

Step 1: Install the hooks into the roof wood beam.

Step 2: Install the crossbeam and the crossbeam connector.

Step 3: Place the modules on the crossbeam, and then install the module clamps.

